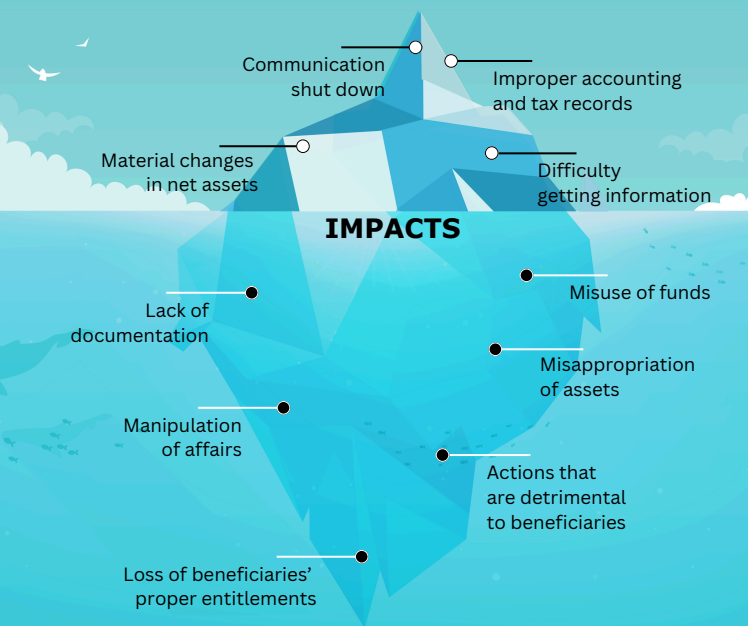


Estate Disputes

The tip of the iceberg

Here are some signs that something may be lurking below the surface:



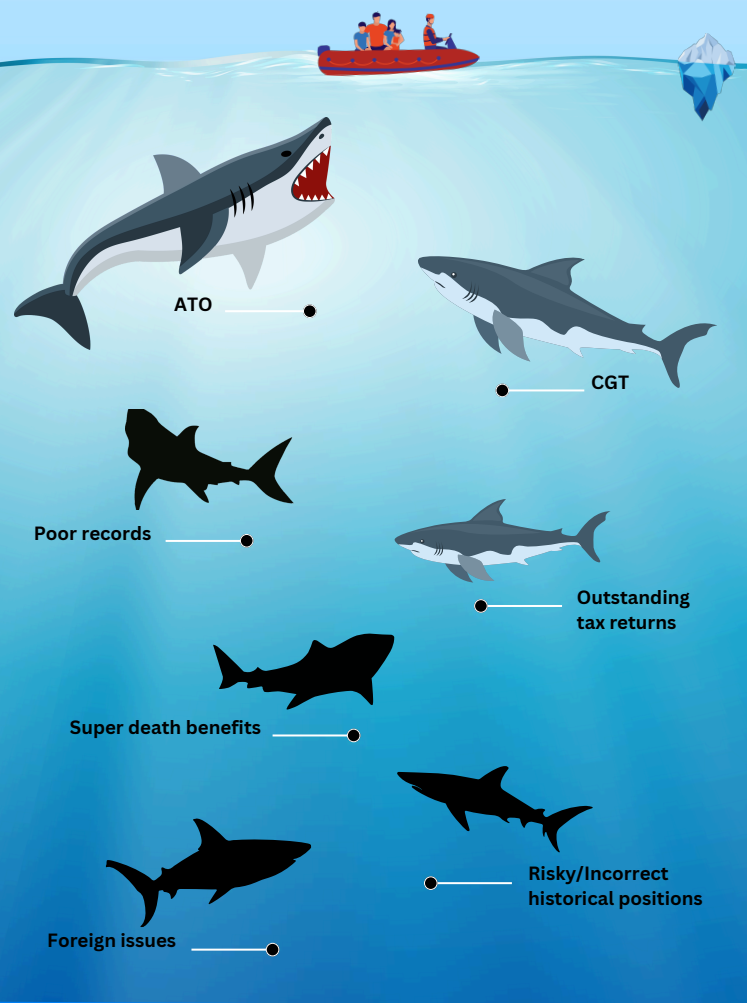
How Pilot's Forensic accountants can help

- Assist in compiling documents and requesting information
- Identifying assets, liabilities and income
- Tracing assets
- Reconstruction of records
- Assessing operational asset values
- Preparation of Expert Reports
- Commercial approach and resolutions
- Developing tax effective outcomes

If you would like to learn more, please contact **Brad Hellen**, **Cameron Woodcroft** or **Jane Leeuwendal** from Pilot's Forensic Accounting team on info@pilotpartners.com.au or (07) 3023 1300.

Navigating the Tax Waters: Identifying Hidden Dangers

Taxation issues that may occur in estate matters



If you would like to learn more, please contact **Murray Howlett** or **Tom Howard** from Pilot's Taxation Advisory team on info@pilotpartners.com.au or (07) 3023 1300.